



LOCAL MATTERS

LISMORE CITY
COUNCIL NEWS
ISSUE 284, 23 JUNE 2025



WWW.LISMORE.NSW.GOV.AU



COUNCIL'S RECORD BUDGET SPEND

Lismore City Council will invest a record \$244.1 million to improve capital infrastructure, including roads, bridges, buildings, water and sewerage this coming financial year after Councillors today voted to adopt the 2025/26 budget after it was put on public exhibition.

Mayor Steve Krieg said this is almost double the amount that was invested in capital programs last financial year in a significantly larger budget that also caps rate rises to the State Government peg of 3.9%.

“Council recently went out to the community to find out what they wanted Council to deliver. You told us roads, stormwater, drains, waste management, flood mitigation, youth services and housing,” he said.

“We listened and that is the focus of this year’s budget.

“This budget is about investing in the right areas across all Council operations to strengthen Lismore’s economy and create a city and villages that attract people to come live, work and raise a family.

“We are investing significantly more in our 750km sewer and water network and 1215km road network, which most people don’t realise is a network greater than the distance from the Sunshine Coast to Sydney.”


Over the coming year, \$184.9 million will be invested on roads and bridges, up from \$74 million the previous financial year, \$28.6 million will be spent improving Lismore’s sewer system assets, up from \$13 million, and \$1.04 million is being set aside to invest in drains, which represents a 25% increase in investment from the previous budget.

The total budget is \$430 million, up from \$301.1 million for 2024-2025, with a forecast to deliver a cash surplus.

“This significant uplift in investment for Lismore was achieved by Council’s ongoing and effective lobbying of Australian and State governments and strong advocacy efforts by civic leaders following the 2022 natural disaster,” Mayor Krieg said.

“Councillors also understand people are doing it tough with the rising cost of living, that’s why we have frozen rates at the State Government’s rate peg of 3.9%.”

Budget Highlights

 <div>\$430 M Total budget What we are investing in backing Lismore.</div>	 <div>\$0 Increase in stormwater charges</div>
<div>\$244.1 M Capital investment What we are investing in building Lismore.</div> 	<div>\$612,441 Projected cash surplus</div> 
 <div>\$212.2 M Total investment in natural disaster restoration works</div>	<div>\$184.9 M Dedicated roads and bridges investment Investing in repairing and reconstructing our transport network.</div>
<div>\$0 Borrowings Limiting burden to rate payers.</div> 	<div>3.9% Rate increase Maintaining at rate peg set by the State Government with no increase.</div> 
<div>\$12.7 M Investing in repairing and reconstructing our community building assets</div>	
<div>\$3.2 M Lismore Regional Airport</div> 	<div>\$8 M City Hall</div>
<div><div><div>\$336.78 M Investing in the basics* Investment in providing the basic services our community expects like water, waste, sewer, roads, bridges. <small>*Including all funded capital works.</small></div><div>\$19.94 M Investing in liveability Investing in sports facilities maintenance, our galleries and libraries, events, pools, dog parks, community assets and playgrounds.</div><div>Investing in community support Investment in supporting community such as concessions, free maintenance services for sporting clubs, grants, incentives, and community peppercorn leases.</div></div></div>	

YAMATO TAKADA STUDENT EXCHANGE SISTER CITY PROGRAM RETURNS IN 2025!

Lismore City Council's longstanding Sister City Student Exchange Program is back, offering local high school students the chance to experience life in Japan from 30 September to 11 October 2025.

This exciting program allows students to immerse themselves in Japanese culture and cuisine, represent their city and school as cultural ambassadors, and build lifelong friendships. Student applications are currently open.

The exchange celebrates the 62-year Sister City relationship between Lismore and Yamato Takada – the oldest of its kind in Australia – and continues to provide a unique opportunity for young people to explore the world and broaden their horizons.

We're also welcoming students from Yamato Takada to Lismore in July and August, and we're currently seeking:

- Host Families to provide a warm welcome and a taste of Aussie life
- A Chaperone to accompany Lismore students on their journey to Japan
- Student applications for the 2025 exchange

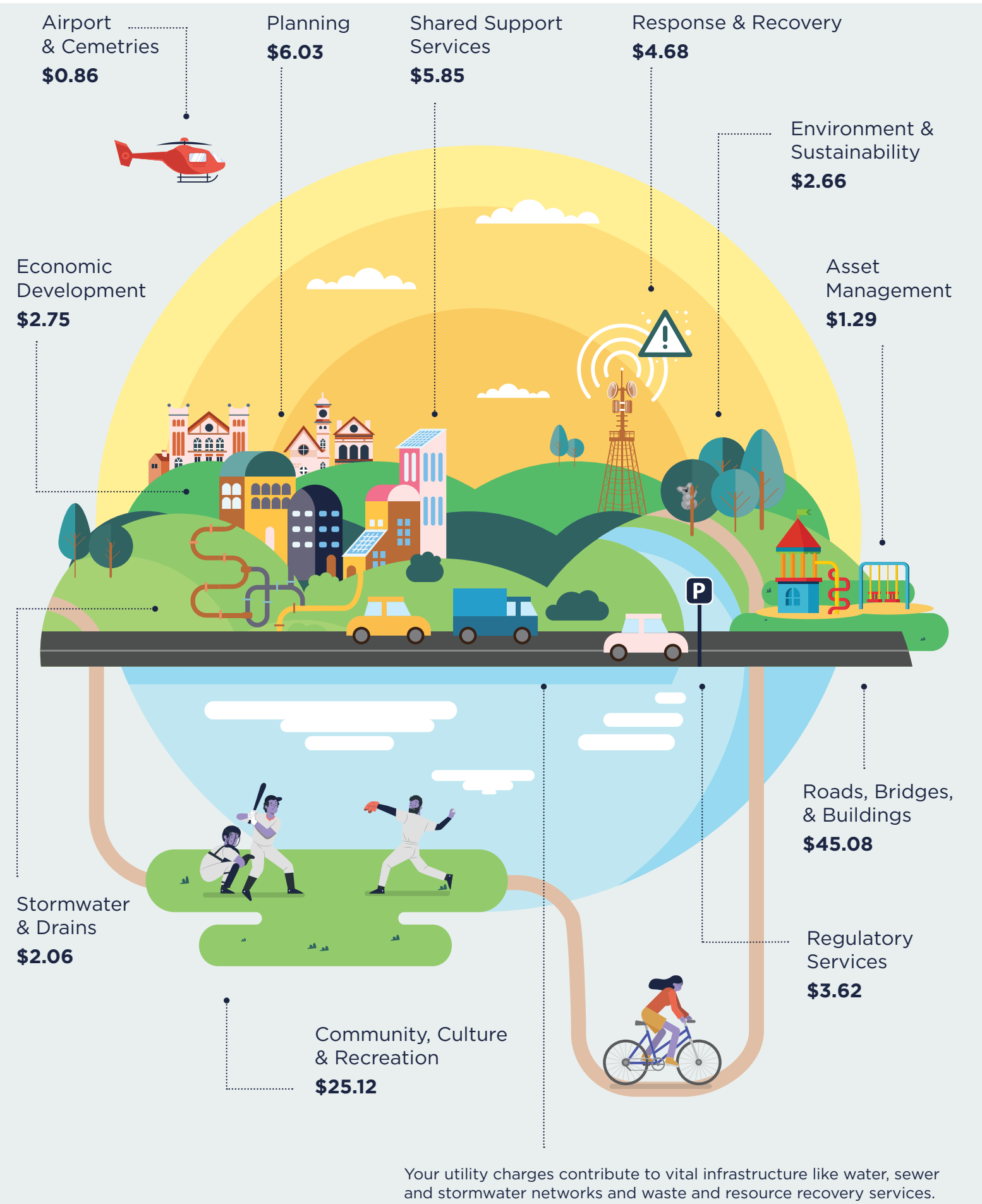


Applications close 30 June 2025.

For more information and to apply scan the QR Code or go to: www.lismore.nsw.gov.au/sister-city-exchange

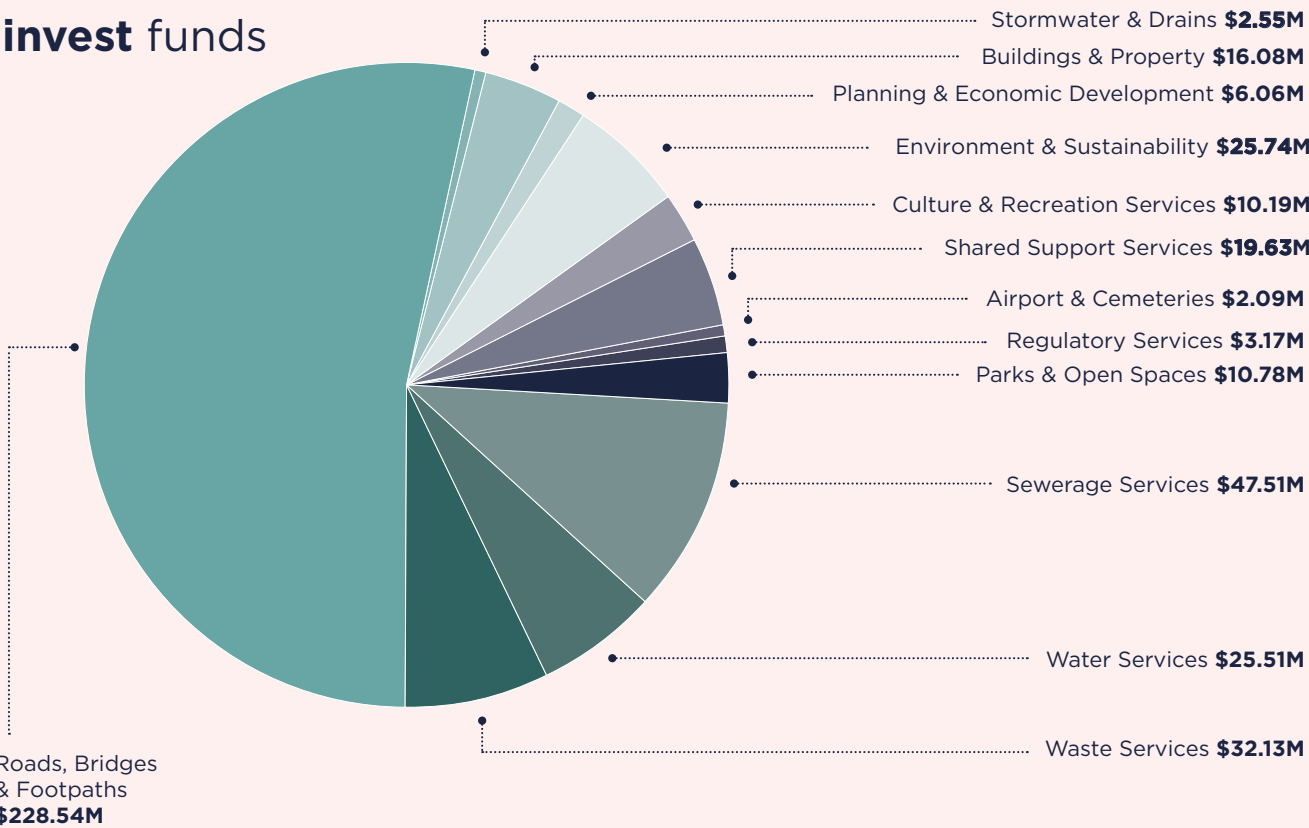
How your rate dollar is invested

Every \$100 can be divided into the following facilities and services costs.



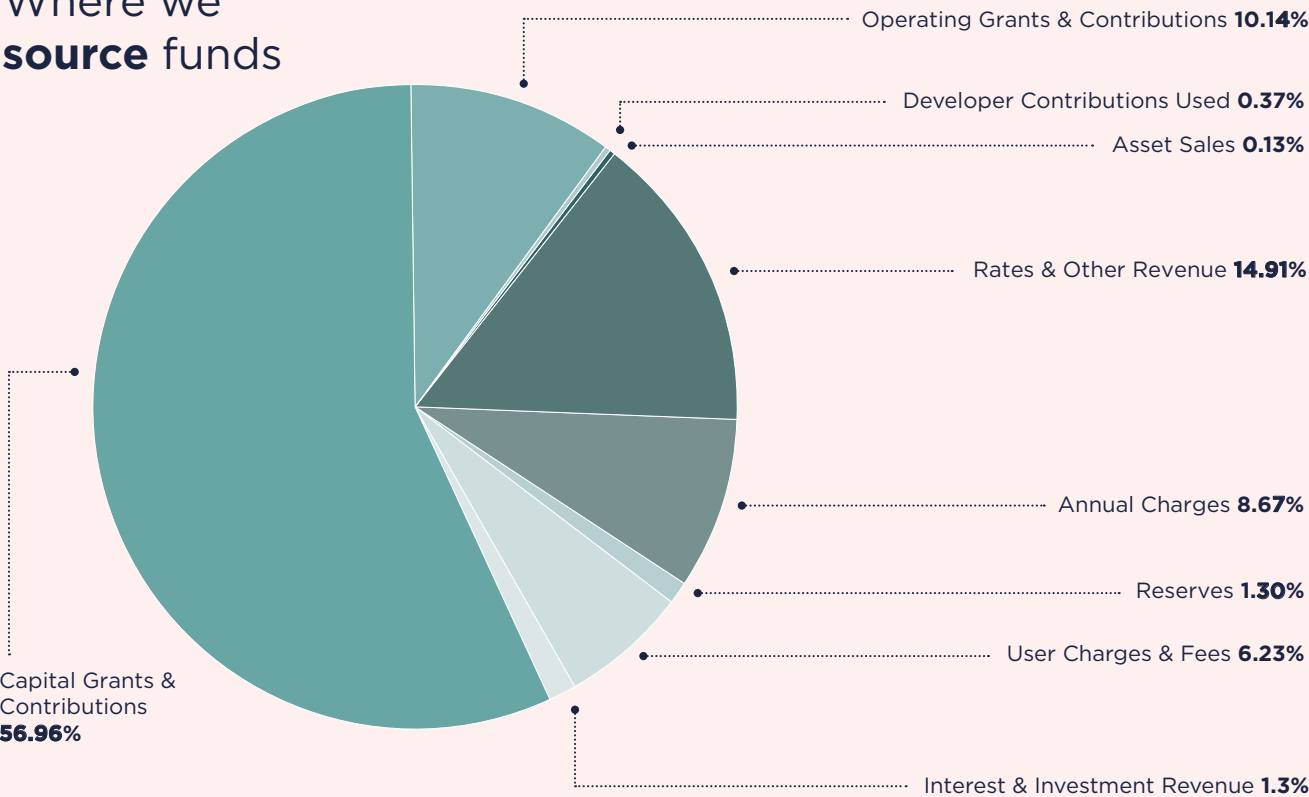
2025/26 Total Budget Spend \$430M

Where we invest funds



2025/26 Overall Spend Funding \$430M

Where we source funds



COUNCIL ADOPTS REIMAGINE LISMORE COMMUNITY STRATEGIC PLAN

Lismore City Council has adopted the Reimagine Lismore Community Strategic Plan (CSP) 2025–2035, along with the Delivery Program 2025–2029 and Operational Plan 2025–2026, at an extraordinary Council meeting held on Tuesday, 17 June.

Shaped through deep and widespread community engagement, the new unified format gives residents a clear view of how Council's actions align with the community's aspirations.

Lismore City Mayor Steve Krieg said this marks a significant milestone for the city, noting that the original Imagine Lismore CSP, first created in 2013 and updated in 2017 and 2022, no longer reflected the needs of a community and region that have seen significant change.

"Lismore is ready for a renewed, forward-looking plan shaped by the community's current experiences and aspirations. The rigorous engagement process undertaken over the past six months has ensured this CSP delivers on that," he said.

The engagement process offered many opportunities for the community to contribute, resulting in more than 1700 Lismore residents participating in a community scorecard, local workshops and feedback sessions on the draft plan. This methodical and inclusive approach resulted in the most comprehensive and collaborative strategic planning process in Lismore City Council's history.

"The feedback we received was honest and delivered a clear mandate for change. The community's priorities are evident, strengthening flood resilience, improving road safety, advocating for youth services and supporting diverse housing options. This CSP, which for the first time integrates the Delivery Program and Operational Plan, provides a single, measurable roadmap for how Council will address these needs," Mayor Krieg said.

The specific actions for the 2025–2026 financial year are outlined in the plan and grouped under five key performance areas: the built environment (Place), natural environment (Environment), economic development (Prosperity), community well-being (Community), and Leadership. Each area includes objectives and strategies developed in collaboration with the community to help reimagine and shape Lismore's future.

Reimagine Lismore: A Plan for the Future

An integrated Community Strategic Plan, Delivery Program and Operational Plan

1 July 2025 – 30 June 2035

Lismore
City Council



To view the Reimagine Lismore Community Strategic Plan, visit Council's website at www.lismore.nsw.gov.au/CSP or simply **scan the QR Code**.

DEVELOPMENT CONSENTS ISSUED

ENVIRONMENTAL PLANNING AND ASSESSMENT ACT

In accordance with the provisions of Section 4.59 of the Act and Clause 124 of the EP&A Regulation, notification is given that the undermentioned developments have recently been granted consent.

APPLICATION DETAILS

24/154 34 Cecil Street NIMBIN: To undertake the use of an existing building as a secondary dwelling and the use of a roof structure and deck associated with an existing caravan.

24/196/2 19 Julieanne Place BEXHILL: Section 4.55(1A) modification to development consent 5.2024.196.1 by removing the lounge room and spa from approved plans and the construction of a covered deck.

24/262 16 Holmes Circuit CHILCOTTS GRASS: To undertake the construction of a detached dual occupancy with associated retaining walls and earthworks.

24/331 22 Barrys Road MODANVILLE: To undertake the erection of a shed, associated driveway, retaining walls and vegetation management works.

25/26 7 Lancaster Drive GOONELLABAH: Alterations and additions to the existing NSW State Emergency Service (SES) Zone Headquarters Facility.

25/42 91 Woodlark Street LISMORE: Change of use of part of a building from a pub to a food and drink premises and associated internal alterations and signage.

25/54/2 15 Hillside Drive NIMBIN: Section 4.55(1) modification to development consent 5.2025.54.1 to correct an administrative error in Condition 5.

25/68 325 Bangalow Road HOWARDS GRASS: Primary production subdivision to create two (2) lots.

25/78/2 32 George Drive CHILCOTTS GRASS: Section 4.55(1) modification to development consent 5.2025.78.1 by correcting the BAL Assessment documentation.

25/92 1047 Bangalow Road BEXHILL: Dwelling.

25/97 49 May Street DUNOON: Inground swimming pool and associated decking.

Details of applications and consents, together with conditions attached, may be inspected at Council's Corporate Centre during business hours or via DA Tracking at www.lismore.nsw.gov.au.

Save the date



LANEWAYS OF LISMORE ARTS FESTIVAL

23

AUGUST

LISMORE CBD

A free celebration of art and music — featuring renowned live bands and DJs, vintage, vinyl and art markets, interactive lighting experiences, a curated children's zone, food stalls and bars — transforming Lismore's creative laneways into a vibrant festival hub.

REGIONAL
arts
AUSTRALIA



Australian Government
Regional Arts Fund

Lismore
City Council

WHAT'S ON AT YOUR LOCAL LIBRARY



One-on-One Tech Lessons

Our tech team can help you master the basics of your phone, tablet or laptop, or assist with general tech questions you may have.

“Many thanks for very easy-going helpful advice on Win 11 for me. Much was covered and pleased to know I can always come back,” - Attendee

Call Lismore (6621 2464) or Goonellabah Library (6625 1235) to book a 45-minute session tailored to your needs. Sessions are held Tuesday and Thursday at Lismore, and Monday and Wednesday at Goonellabah.

Tech assistance is now available at the Mobile Library on Thursday at its Nimbin location. BYO device and no bookings required at the Mobile Library.

Story Time in the Quad

Every second Thursday of the month at 10:30am, kids aged 3-5 and their families are invited to gather in the Quad for a playful, open-air session of stories, songs and craft.

Come along on Thursday, 10 July for a NAIDOC-themed session that’s fun for the whole family! Bring a hat, some snacks and a creative spirit. No bookings required.

P.A. Thomas Author Talk at Goonellabah Library

Thursday, 24 July 10.30am

Join Byron Bay author P.A. Thomas live in conversation at Goonellabah Library to talk about his latest page-turning beachside murder mystery, *The Sunbaker*, the follow-up to his first book, *The Beacon*. In *The Sunbaker*, overworked forensic pathologist Nicola Fox arrives at her Brunswick Heads holiday house for a long-overdue break and is shocked to discover a sunbaker in her backyard who’s been dead for some time. Register via the QR Code to join us for a chat with P.A. Thomas about his latest murder mystery, why he chooses the local settings, and the inspiration behind his colourful characters. Bookings required.



SALE OF PUBLIC SPACES (UNATTENDED PROPERTY) CLASS 3 VEHICLES 30 JUNE 2025

Lismore City Council is disposing of the following vehicles by written Auction

10/24	191 HB 8	QLD	JN1TANZ51A0016039		White	Nissan	Murano
101/2024	DF 20 ZQ	NSW	JMFXTCW5W7Z001444		Black	Mitsubishi	Outlander
128/2024	DWZ 03 V	NSW	MNTBAAB17A0009641		Red	Nissan	Pulsar
172/2024		NSW	6T153AEA10D004229		Silver	Toyota	Carolla
177/2024	VAA 765	NSW	6T153AEA20D700168		Silver	Toyota	Carolla
178/2024			6FPAAAJGAT6Y51182	2006	White	Ford	Territory
7/2025	CY 40 JQ	NSW	JTEBU29J800038656		Silver	Toyota	Prado
18/2025		NSW	JMOER103200244574		Grey	Mazda	CX7
65/2025	TE 55 ZZ	NSW	6HFJUSTBXAC108528	2010	Green	Trailer	
67/25	DA28XT	NSW	KMHSG81WR8U261518		Gold	Hyundai	Santa- Fe
70/2025	FHB 30 R	NSW	KL3CD266JBB161070		White	Holden	CG
71/2025			6MMTE2D42VT032057		White	Mitsubishi	Magna
86/2025			VHGE23 011955		white	Nissan	
87/2025	1DKP131	WA	JMFGNP04V7A002012		White	Mitsubishi	

Vehicles will be available for inspection (No Keys, vehicle sold as is, all vehicles are unregistered) from 9am to 10am on Monday, 30 June 2025, at Impound Yard, located in Council's Waste and Recycling Centre, 313 Wyrallah Road, East Lismore.

Bid sheets will be available on the day. Submissions will only be accepted in writing and are required to be **placed in the Tender Box in the foyer of Council's Corporate Centre, 43 Oliver Avenue, Goonellabah.**

Auction Submissions close: 2:00pm, Monday 30th June 2025.

STATE-OF-THE-ART WASTE COLLECTION FLEET CONTRACT AWARDED

Lismore City Council is set to upgrade its waste collection fleet, with eight new state-of-the-art side-loader trucks hitting the streets from September this year.

The new vehicles will be delivered progressively with the remainder rolling out every two to three months.

This investment forms part of Council's Strategic Waste Investment Option and supports Lismore's ongoing reconstruction and service improvements after the 2022 natural disaster.

The new trucks will feature improved safety measures such as built-in cameras, fire suppression and work-zone monitoring, enhanced efficiency with faster bin lifts and improved hydraulics and modern Euro VI engines capable of running on biodiesel to lower emissions. Standardised components and modern technology will also cut maintenance costs and improve long-term reliability.

Mayor Steve Krieg stated the decision to award the contract to the Volvo Group was based on a rigorous tender process.

"Volvo's proposal was selected for offering the best-value based on cost, technical compliance, local support and performance," he said.

"These new vehicles will enable Council to deliver a more effective and sustainable waste collection service to our community.

With improved reliability, they will also provide long-term operational savings to Council."

The \$5 million fleet replacement, fully funded through an NSW Government grant, will see new vehicles supplied locally by Southside Agencies, Lismore, following Council's decision at its 10 June meeting to award the contract to Volvo Group Australia.

Council forecasts significant operational savings over the life of the new fleet, along with improved service continuity for residents. This latest investment underlines Lismore City Council's ongoing commitment to sustainability, value for money, and quality community services.



The Lismore LGA is set to upgrade its waste collection fleet



CONTACT US:
6625 0500

Corporate Centre: 43 Oliver Avenue, Goonellabah

Hours: Monday to Friday, 8.30am to 4.30pm

Post: PO Box 23A, Lismore, NSW 2480

Email: council@lismore.nsw.gov.au

Web: www.lismore.nsw.gov.au



Find us on Facebook, Instagram
and YouTube.

