

## COMPLETED WORKS

### Flood Restoration – Roads & Bridges Program

#### **Gungas Road**

Recently, construction activities along Gungas Road inadvertently impacted a local bush regeneration site due to rock relocation. Upon being alerted to this issue by concerned residents, our staff promptly responded to address the situation. A remediation plan was swiftly implemented to mitigate the damage and restore the affected area. This included the installation of a sediment barrier and native *Lomandra* plants. To further support the site's recovery, a layer of mulch was applied, which will aid in moisture retention and weed suppression. This collaborative effort between the residents and our team demonstrates our commitment to the community and preserving local ecosystems.



#### **Terania Creek Road (Branch Creek Bridge)**

The Branch Creek Bridge was officially opened to traffic on January 17, 2025, with temporary traffic control measures in place. Currently, 90% of the civil works are completed and continuing. The final bitumen sealing of the new bridge approaches is scheduled for January 31, 2025. Full site de-establishment is expected to be finished in early February.



### Flood Restoration – Buildings Program

#### **Lismore Library**

Throughout December, the Lismore Library saw significant progress as the finishing touches were meticulously carried out. By the month's end, Level 1 was fully furnished, with shelving and signage properly installed, while Level 2 flooring was also completed. In early January, the books made their way back to the shelves, and a final walkthrough with the Client ensured every detail was in place. The only remaining activity is the installation of the lift, currently on back order.



## Miscellaneous Grants Works

- **QUAD – Harold Fredericks Carpark** – Works completed during January.
- **Sam Trimble Oval** – Brick Building Refurb Handed over 9 December 2024
- **Riverside Park Toilets** – Epoxy flooring and plumbing electrical fit off was completed during December.



Sam Trimble Oval



Sam Trimble Oval



Riverside Park Toilets



Riverside Park Toilets



Riverside Park Toilets



Riverside Park Toilets

## CURRENT WORKS

### Flood Restoration – Roads & Bridges Program

#### Blue Knob Road (Site DM00680)

All no-fines concrete backfilling and shotcrete works are now completed. The remaining works will be completed once the soil nail installation at Site DM01366 is concluded. This will enable the commencement of pavement replacement and road geometry corrections.



Blue Knob Road (Site DM00680)

### Blue Knob Road (Site DM01366)

The CMC subcontractor has completed the installation of the temporary excavation support and is currently installing the remaining soil nails. Upon completion of this task, CMC will proceed with the placement of the sacrificial formwork, followed by backfilling and shotcrete application.



Blue Knob Road (Site DM01366)

### Blue Knob Road (Site DM01361/DM01449)

Backfilling operations have commenced by the CMC subcontractor at the northern end of the site, which are anticipated to be completed by the end of the month. Following this, the final layer of shotcrete will be applied. At the southern end, the majority of the no-fines concrete backfill has been completed, with finalisation expected by the end of the month. This progress will enable the installation of the guardrail footing and the commencement of pavement replacement.



Blue Knob Road (Site DM01361/DM01449)

### Gwynne Road

The contractor, HXR, is making considerable progress on Gwynne Road. The installation of underground pipes are completed, and road resurfacing is currently underway, with sealing expected by late February. Additionally, roadside drainage will be finalised as part of the upgrade works.



Gwynne Road - Progress

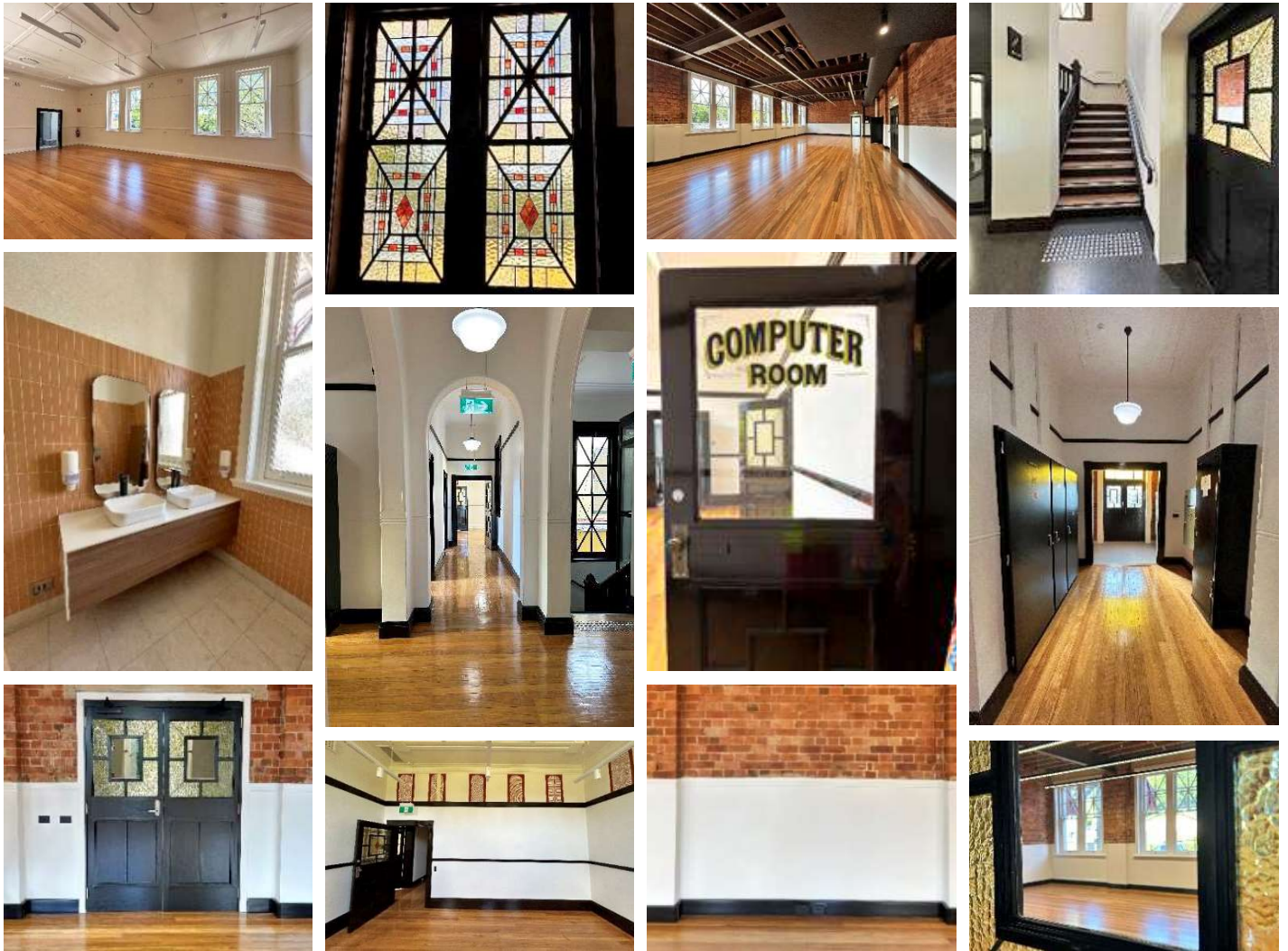
## Skyline Road South

Works have commenced on the pavement/reseal and landslip with the pavement works anticipated to take approx. four weeks to complete, while the landslip remediation is expected to be finished within two to three months. A road closure is currently in effect at the landslip site; however, residents will always have access via the signed detour route in place.

## Flood Restoration – Buildings Program

### Lismore Municipal Building

During December, the Municipal Building underwent final preparations, including the relocation of furniture back into the main room and the completion of flooring. Final cleaning is currently in progress, will works completed internally, and external works, including landscaping and carpark scheduled to continue throughout February.



*Lismore Municipal Building*

## Miscellaneous Grants Works

- **Nimbin – New Toilet Block** – Slab preparation for concrete pour commenced with pour 1 & 2 occurring early February along with connection of the sewer.



## Public Amenities Buildings

- **Riverview Park Amenities** – Building construction works underway with turfing underway late January.
- **Albert Park Amenities** – Slab complete, awaiting Modular building delivery.
- **Sam Trimble Oval Amenities** – Slab complete, awaiting Modular building delivery.
- **McKenzie Park Amenities** – Slab complete, awaiting Modular building delivery.
- **Neilson Park Amenities** – Slab poured, building construction works underway.
- **Nesbitt Park (Cricket)** – Slab poured, building construction works underway.
- **Lismore Lake Amenities** – Slab poured, building construction works underway.
- **Albert Park Amenities** – Site levelling and shaping underway.
- **Wade Park Amenities** – Site prep underway. Awaiting building delivery early February. The very important Wade Park Bus is now in a secure location while the works get underway.



Riverview Park Amenities



Riverview Park Amenities



Riverview Park Amenities



Albert Park Amenities



Neilson Park Amenities



Neilson Park (Cricket)



Lismore Lake Amenities



Lismore Lake Amenities



Wade Park Amenities



Wade Park Amenities



Wade Park Amenities

### Visitor Information Centre

During January, the slab footings were excavated and prepared for the concrete pour. Construction activities will continue throughout February for paving and some flooring works, in preparation for the works to be completed.



Visitor Information Centre

### Flood Restoration – Water & Waste Program

#### Lismore Waste Facility (Landfill Cell 2B)

The engineering team have completed the Cell 2B – Site investigations. Engineers are now focusing on the finalising the design to refurbish the landfill Cell 2B at the Lismore Waste Facility post 2022 flood event damage.



Lismore Waste Facility

### FUTURE WORKS

#### Flood Restoration – Roads & Bridges Program

##### Kyogle Road

Pavement investigation, survey and detailed design will commence February 2025, with anticipated completion of design June 2025.



Damage after Natural Disaster

##### Stanger Road

Works is set to start on one on the minor slips on Stanger Road in mid-February. The works involves a minor road realignment and installation of a guardrail. The works is expected to take 4 weeks with the road remaining open under traffic control for local traffic during this time.

### Suffolk Road

A contractor will be engaged to reconstruct a concrete box culvert on Suffolk Road. During the 2022 natural disaster event the previous pipe culvert was destroyed. A temporary crossing was completed as emergency work, and we have received approved EPAR funding for the reconstruction. Works are expected to occur mid-February to mid-May 2025.



Suffolk Road – Damage after Natural Disaster

### Tuntable Creek Road

Vegetation mulching, pavement investigation, survey and detailed design will commence in late January, with completion of design anticipated for June 2025.



Tuntable Creek Road – Damage after Natural Disaster

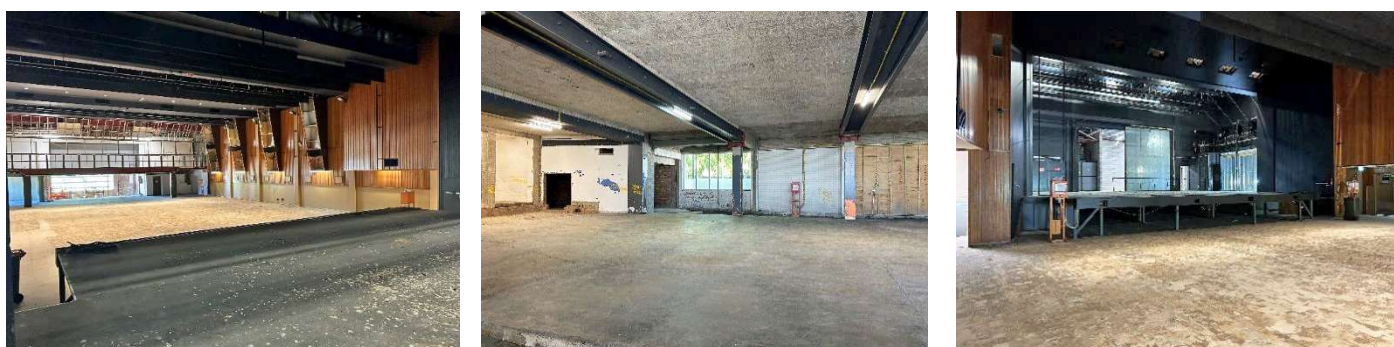
### Wilson Street

Unfortunately, the Wilson Street project has encountered a delay. This is due to findings from the initial geotechnical investigation, which have necessitated additional design work. We are now planning to commence these works around the upcoming school holiday period. However, please note that the project duration is estimated to occur for 6-8 weeks, given the changes to the design requirements. We anticipate being able to provide you with a more precise timeline in the coming weeks once the design work has progressed further. We appreciate your patience and understanding in this matter. Should you have any questions or concerns, please do not hesitate to contact us.

### Flood Restoration – Buildings Program

#### Lismore City Hall

Internal rendering works are scheduled to recommence at the site in March. Temporary lights and distribution boards are set up along with scaffolding erected for stair access to the roof.



## **Flood Restoration – Resilience Program**

### **CBD Stormwater CCTV Inspection Future Works**

The Flood Restoration Portfolio will be working with the LCC Water team to select a contractor to complete investigation of Lismore CBD underground stormwater pipes. A Request for Tender will be available in February for businesses to make an application.

### **East Lismore Drains**

The Coral Trees have been treated for the works adjacent to Wyrallah Road Public School and Thistles Soccer Fields in preparation for the upcoming drain works. Kyogle Earthworx, the works contractor, will commence mulching and clearing operations on the 3rd of February.

---

If you would like to be added to a notification list for a specific region, please visit the below website page and completed the notification form to register your contact details to receive Flood Restoration Portfolio works updates.

<https://www.lismore.nsw.gov.au/Business/Flood-Restoration-Portfolio/FRP-Project-Updates>