

COMPLETED WORKS

Flood Restoration – Roads & Bridges Program

Gravel Roads Program – Multiple Sites

Throughout the month, several roads were completed with the gravel roads program. Grading and drainage was completed for Ashlin Road, Mulvena Road, Lavis Road, Behan Access, McKinnon Road, Keerrong Road, Bishops Creek Road and Missingham Road. Furthermore, emergency grading was completed on Boerie Creek Road, Boundary Creek Road, Chelmsford Road, Cordyline Road, Fathers Road, Hewitt Road, Lindsay Road, and Quilty Road. We thank the community for their patience as we continue through this extensive schedule of works.



Lavis Road



Lindsay Road



Lindsay Road

CURRENT WORKS

Flood Restoration – Roads & Bridges Program

Blue Knob Road

Works are progressing well as previously reported. At Site 1 (DM00680) the contractor, CMC, has completed placement of the shotcrete and the no fines concrete backfilling with setup for the guardrail footing pour started with expected completion during December.

Activity on Site 2 (DM01366) has been paused due to ongoing issues resulting from multiple weather events. The contractor is currently working through a remediation plan with the designers and will commence following the completion of the soil nails installation at site DM01361/DM01449.

Lastly, Site 3 (DM01361/DM01449) is proceeding on schedule with the CMC subcontractor completing the installation of 95% of the permanent soil nails at this site. In the following weeks, CMC will undertake the acceptance test on the nails selected by the principal to verify the overall quality of the work. This will allow the commencement of the backfilling operations and installation of the shotcrete on walls 3 and 4.



Blue Knob Road

Gravel Roads Program (Multiple Sites)

Works continue for grading over 150 kms of unsealed gravel roads, which suffered substantial damage due to declared natural disasters in December 2023 and April 2024. The most severely affected roads receive highest priority to expedite critical route restoration. This ambitious project, one of the largest of its kind, involves Council deploying six distinct work crews, strategically clustered geographically to optimise efficiency and resource allocation. Current and upcoming works include Armstrong Road (Grading and Drainage), Beacom Road (Grading and Drainage), Bentley Road (Emergency Grading), Blade Road (Emergency Grading), Emily Street (Emergency Culvert Outlet Repair), Emerson Road (Emergency Grading), Fox Road (Grading and Drainage), Gwynne Rd (Resealing and Drainage), Leycester Rd (Resealing and Drainage), Lychee Drive (Grading and Drainage), Maso Road (Emergency Grading), Nightcap Range Road (Grading and Drainage), Repentance Creek Rd (Resealing and Drainage), Robb Road (Emergency Grading), Starkey Road (Emergency Grading), Suffolk Road (Emergency Grading), Tuntable Creek Rd (Resealing and Drainage) and Quilty Road (Emergency Grading).



Cordyline Road



Chelmsford Road

Gwynne Road

Works are progressing well, the contract is currently replacing culvers under the road to allow better roadside drainage. Once complete, work crews will focus on pavement construction work, reshaping the road and resealing.



Gwynne Road

Leycester Road

Pavement rehabilitation is progressing well with approximately 250m of open drains completed and two culvert replacements installed. Stabilising works are planned for early December, following by pavement seal mid-month.



Leycester Road

Repentance Creek Road

Repair works are well underway with roadside drainage completed; this will be followed by a pavement seal in the coming month.



Repentance Creek Road

Terania Creek Road (Branch Creek Bridge)

Site establishment and initial earthworks are complete, along with pile installation and the forming and pouring of abutments A and B. Civil works are currently 50% complete. The installation of bridge beams is scheduled for 09/12/24, followed by the forming and steel tying of the bridge deck. The concrete pour for the bridge deck is planned for 19/12/24. Final civil works will be completed, and the bridge will be open to traffic by 30/01/25, subject to weather conditions.



Branch Creek Bridge

Flood Restoration – Buildings Program

Lismore Library

Work on Level 2 is progressing at full speed along with new cabinetry installed and flooring laid. The render and white set removal on Level 2 is also complete and furniture is arriving and being installed. As featured in the photos below, the spaces are taking shape with features such as the reading tree anticipated to be a favourite amongst future readers.



Lismore Library

Lismore Municipal Building

During November at the Municipal building, nosing was installed on the internal stairs. The work on the Safe Room and kitchen area is progressing well. The driveway works are ongoing, and concrete was poured at the base of the rear stairs.



Lismore Manicipal Building

Lismore Regional Airport

Stage 2 of the Airport restoration works are finished with generator load testing underway prior to commissioning the site. The Porte cochere (covered driveway) is now complete, with new signage and final carpark touches in progress.



Lismore Regional Airport

Public Amenities Buildies

- **Riverview Park Amenities**

The slab was completed towards the end of October and is currently awaiting modular building delivery.

- **Albert Park Amenities**

The concrete slab has now been poured and the project awaits the arrival of the modular building.

- **Sam Trimble Oval Amenities**

Slab poured 6/11/2024.

- **McKenzie Park Amenities**

Slab poured.

- **Nesbitt Park (Cricket)**

Demolition works finished and slab prep underway.

- **Neilson Park**

Slab poured 27/11/24.



Albert Park – Early Form Work



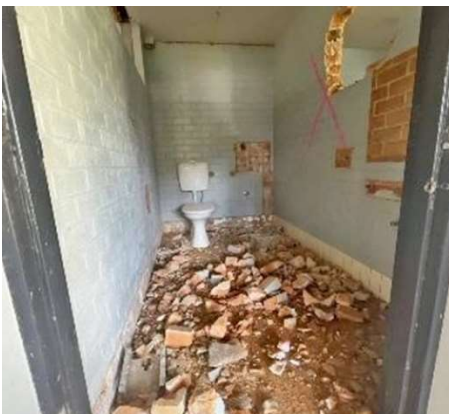
Riverview Park – Concrete Slab Pour



Neilson Park – Concrete Slab Pour

Visitor Information Centre

The ground floor upgrades are underway with the commencement of internal wall and fixture demolition. The slab preparation for bathroom extension also in progress.



Visitor Information Centre

Flood Restoration – Water & Waste Program

Lismore Waste Facility (Landfill Cell 2B)

Onsite investigations have commenced to assess the damage caused by the 2022 flood event. These activities involve removing landfill media to expose lower containment systems, enabling engineering teams to determine the extent of replacements and repairs.



Lismore Waste Facility

Flood Restoration – Flood Resilience Program

Urban Drain Cleaning Program

During November, work was focused on the open drains in the CBD area. Crown Street has experienced significant rainfall, and both the council and residents should be aware that street gardens contribute to obstructing water flow in drains. Late November, the Caniba Street drain needed correction and the far end of Casino Street is scheduled for work in early December. The CBD open drain cleaning project will complete its funded scope in early December.



Crown Street – Tree Removal



Crown Street



Crown Street



Crown Street



Casino Street – Tree Removal



Casino Street – Far End



Caniba Street – Exposed water pipe removed



Caniba Street

FUTURE WORKS

Skyline Road

Landslip works on Skyline Road South have been awarded and will commence early in the new year. This will involve a full road closure while 25 horizontal borehole drains are installed, and the pavement is remediated. There will be a detour in place during this time.

Stanger Road

The Stanger Road landslip remediation works will commence early in the new year. This will involve the realignment of Stanger Road and installation of a guardrail. Access along Stanger Road will remain open during this time.