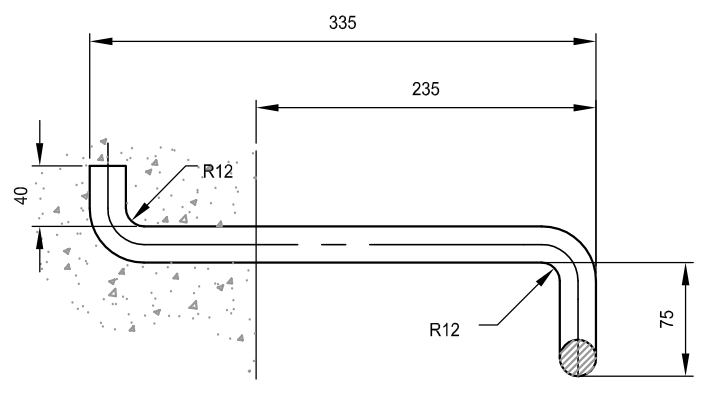
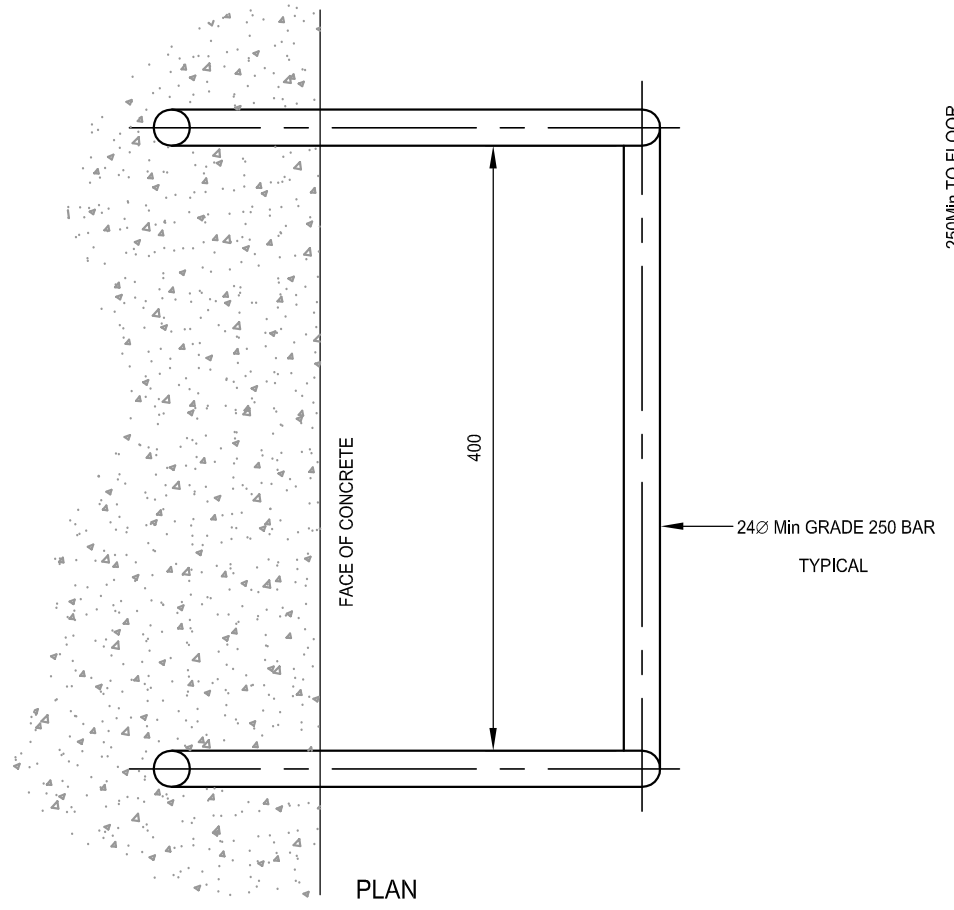


ELEVATION

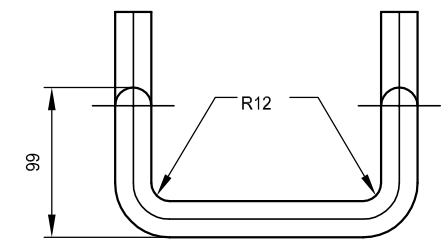
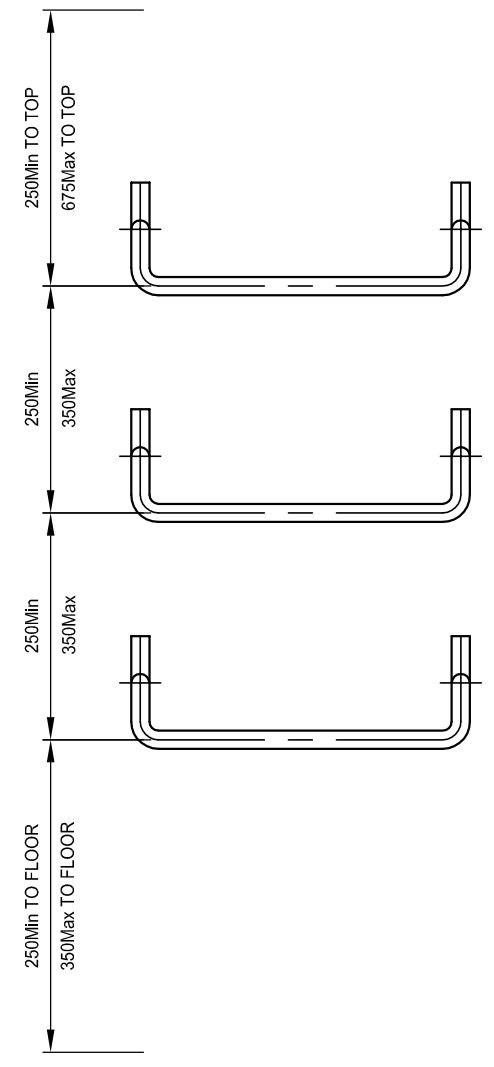


SECTION

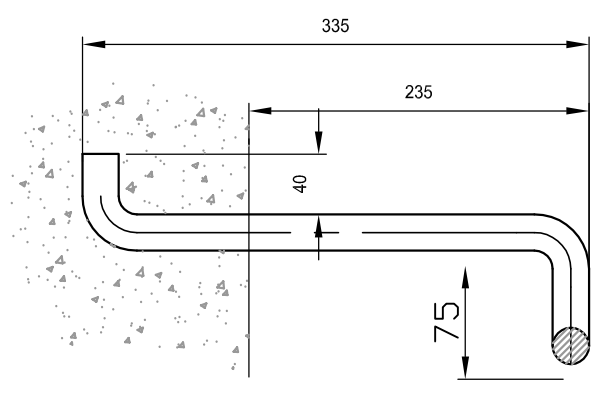


PLAN

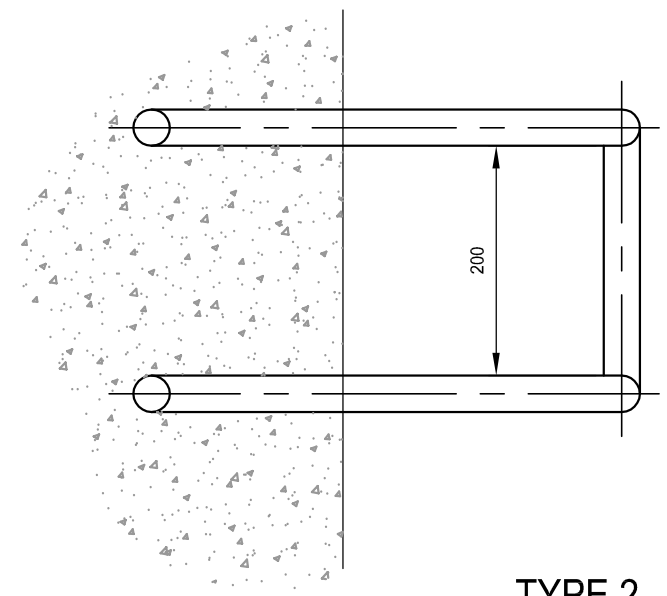
PREFERRED TYPE 1 - INDIVIDUAL RUNG



ELEVATION



SECTION

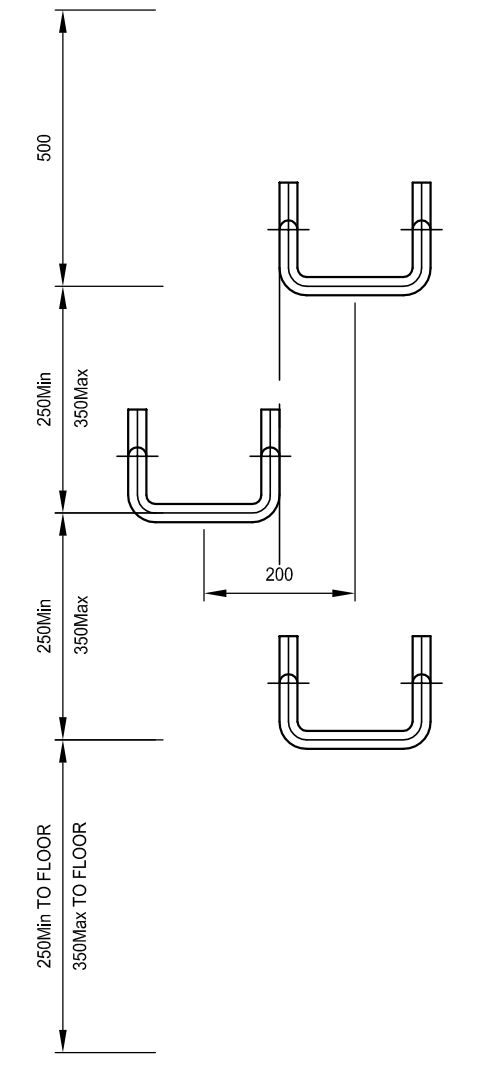


PLAN

TYPE 2 - INDIVIDUAL COPLANAR RUNGS

NOTES

1. STEEL GRADE BAR TO AS3679, HOT DIP GALV. AFTER BENDING
2. ALTERNATIVE STEP IRON TO AS1657 MAY BE USED
3. STEP IRONS ARE REQUIRED IN PITS GREATER THAN 1200mm FROM THE SURFACE WHERE / WHEN APPROVED BY COUNCIL
4. STEP IRONS SHALL BE PLACED ON THE UPSTREAM SIDE OF THE PIT
5. SPACING BETWEEN STEP IRONS SHALL BE CONSISTENT IN ANY ONE PIT



A	ORIGINAL ISSUE		7/7/10/
	REVISIONS	APP'D	DATE

STANDARD DRAWINGS

NORTHERN RIVERS LOCAL GOVERNMENT

STEP IRON DETAILS

STORMWATER
STANDARD
DRAWING
SW-05